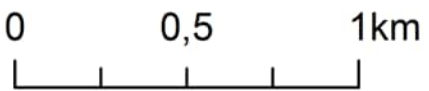


**Legend**

- Axis of the embankment
- ..... Contract 3D.2/1

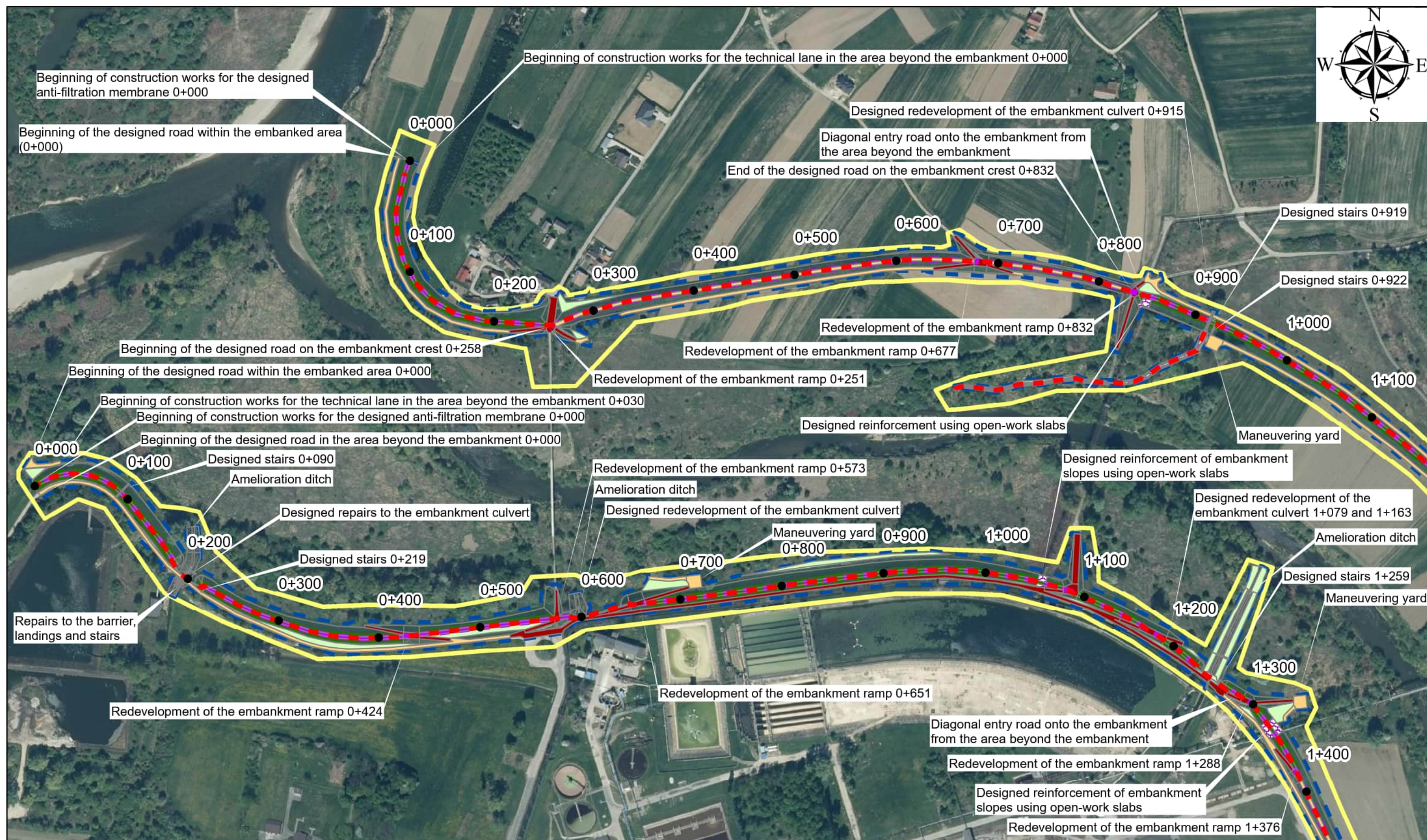
3D.2/2 Expansion of the left and right embankment of the Biala River in the Tarnow Municipality and the City of Tarnow



**Appendix No. 1 Map of Contract Location**  
**INDEX OF SHEETS**

SHEET 1	SHEET 4
SHEET 2	SHEET 5
SHEET 3	SHEET 6





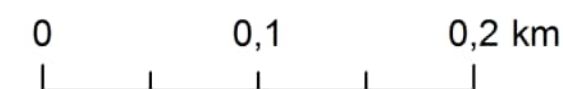
## Legend

- |  |                                   |                               |
|--|-----------------------------------|-------------------------------|
| ● Mileage of embankment                    | Anti-filtration membrane          | Hardening with concrete slabs |
| Axis of the embankment                     | Strengthening with grasscrete     | Designed sowing grass         |
| Designed embankment                        | Leveling of land - sowing grass   | Investment boundary           |
| Completing the losses of existing concrete | Securing the slope with a geogrid | Environmental Conditions      |
| Hardening with crushed stone               |                                   |                               |

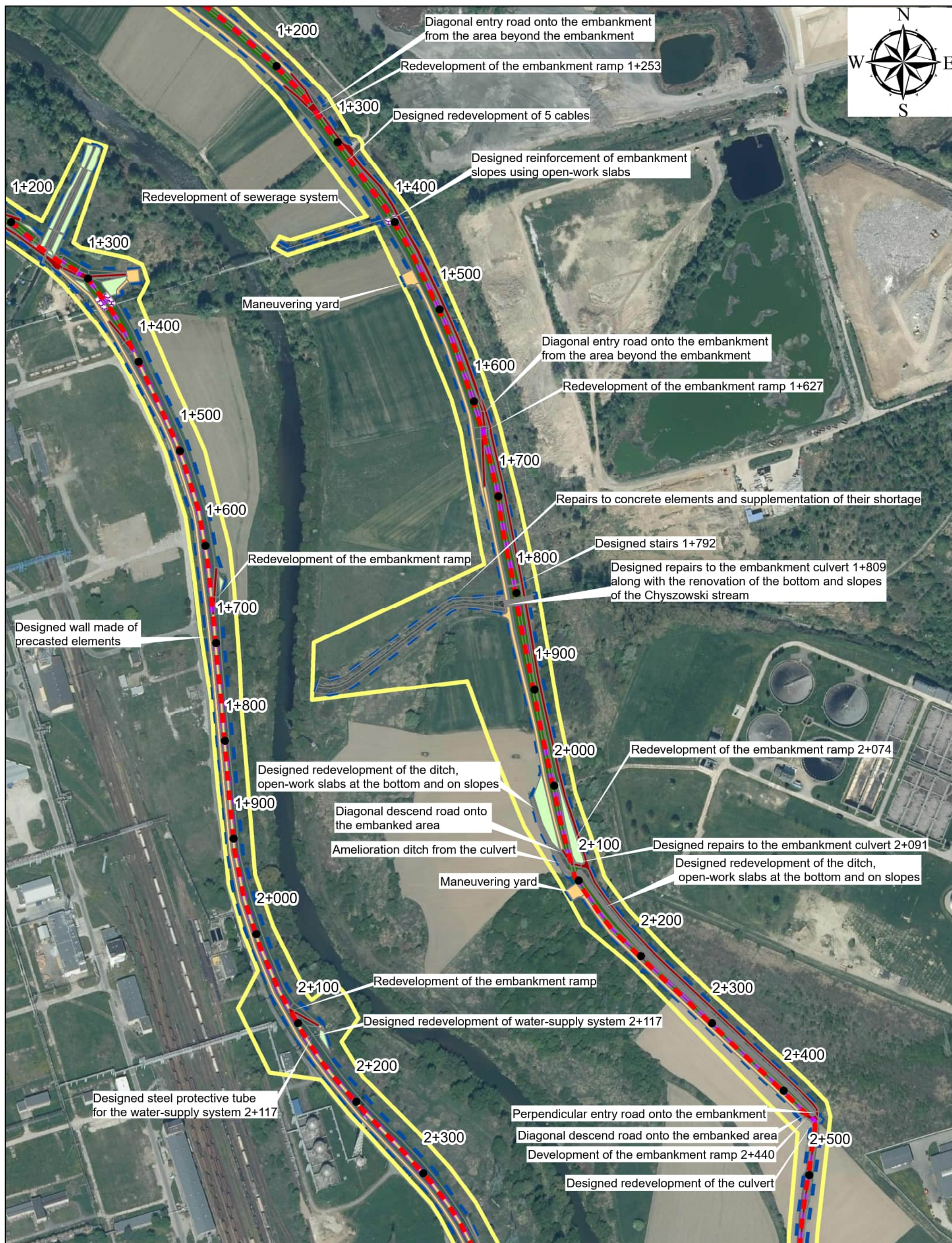
## Appendix No. 1 Map of Contract Location

### SHEET 1

3D.2/2 Expansion of the left and right embankment of the Biala River in the Tarnow Municipality and the City of Tarnow







## Legend

- Mileage of the embankment
- Axis of the embankment
- Designed embankment
- ▨ Completing the losses of existing concrete
- Hardening with crushed stone

- Anti-filtration membrane
- ▨ Strengthening with grasscrete
- Leveling of land - sowing grass
- Securing the slope with a geogrid

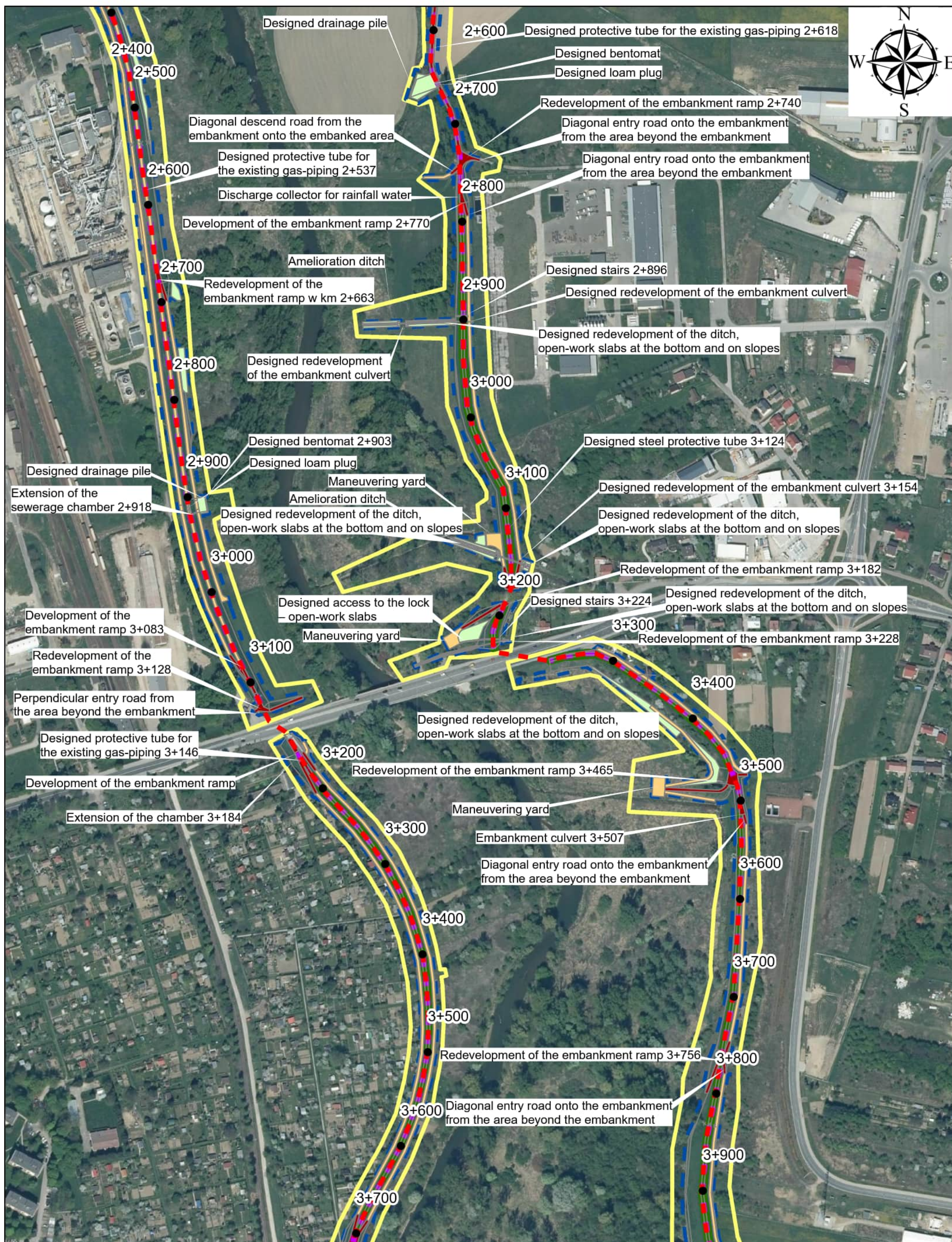
- Hardening with concrete slabs
- Designed sowing grass
- Investment boundary
- Environmental Conditions

## Appendix No. 1 Map of Contract Location SHEET 2

0 0,1 0,2 km

3D.2/2 Expansion of the left and right embankment of the Biala River  
in the Tarnow Municipality and the City of Tarnow





## Legend

- Mileage of the embankment
- Axis of the embankment
- Designed embankment
- ▨ Completing the losses of existing concrete
- Hardening with crushed stone

- Anti-filtration membrane
- ▨ Strengthening with grasscrete
- Leveling of land - sowing grass
- Securing the slope with a geogrid

## Appendix No. 1

## Map of Contract Location

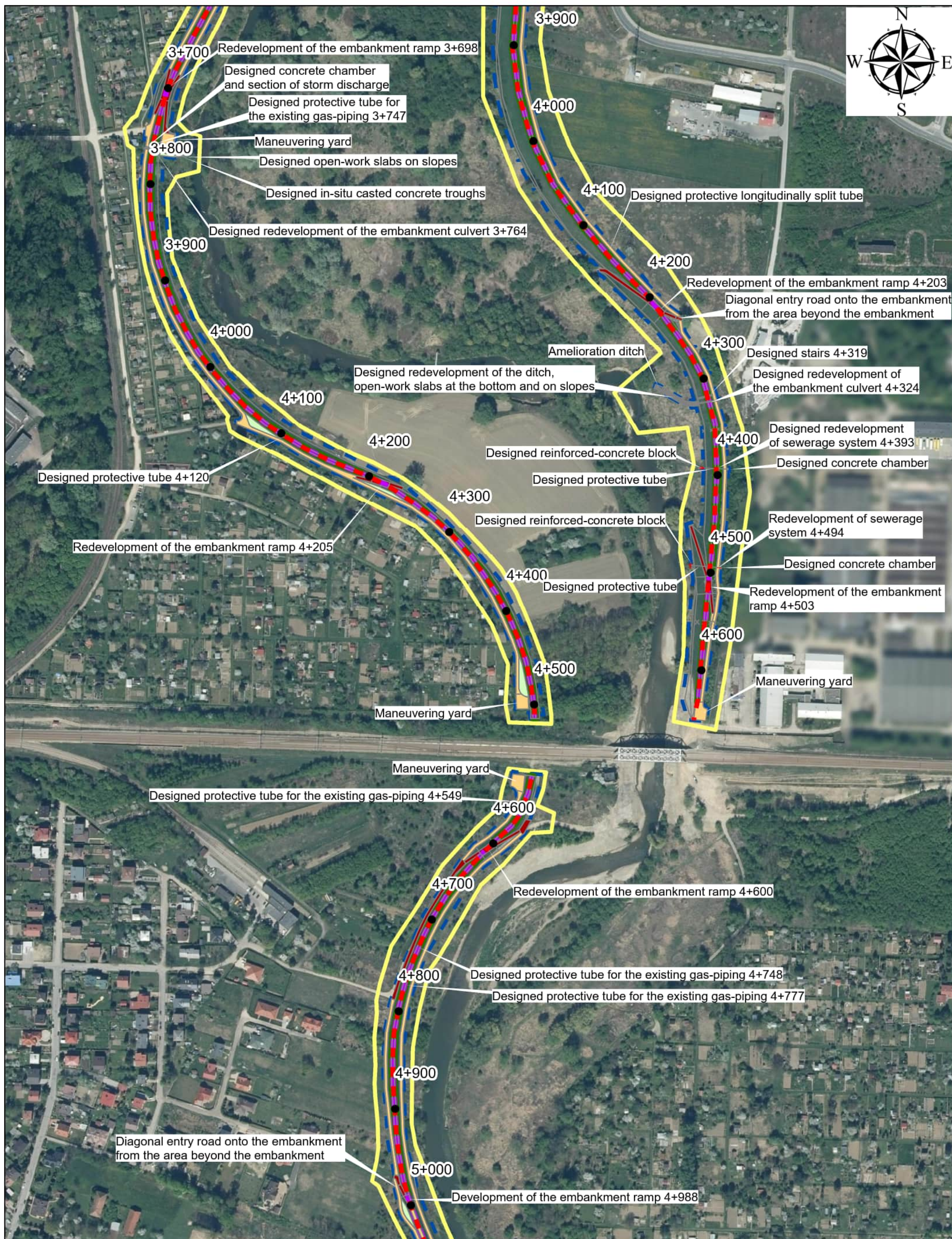
**SHEET 3**

- Hardening with concrete slabs
- Designed sowing grass
- Investment boundary
- Environmental Conditions

0 0,1 0,2 km

3D.2/2 Expansion of the left and right embankment of the Biala River  
in the Tarnow Municipality and the City of Tarnow





## Legend

- Mileage of the embankment
- Axis of the embankment
- Designed embankment
- ▨ Completing the losses of existing concrete
- Hardening with crushed stone

- Anti-filtration membrane
- ▨ Strengthening with grasscrete
- Leveling of land - sowing grass
- Securing the slope with a geogrid

- Hardening with concrete slabs
- Designed sowing grass
- Investment boundary
- Environmental Conditions

## Appendix No. 1

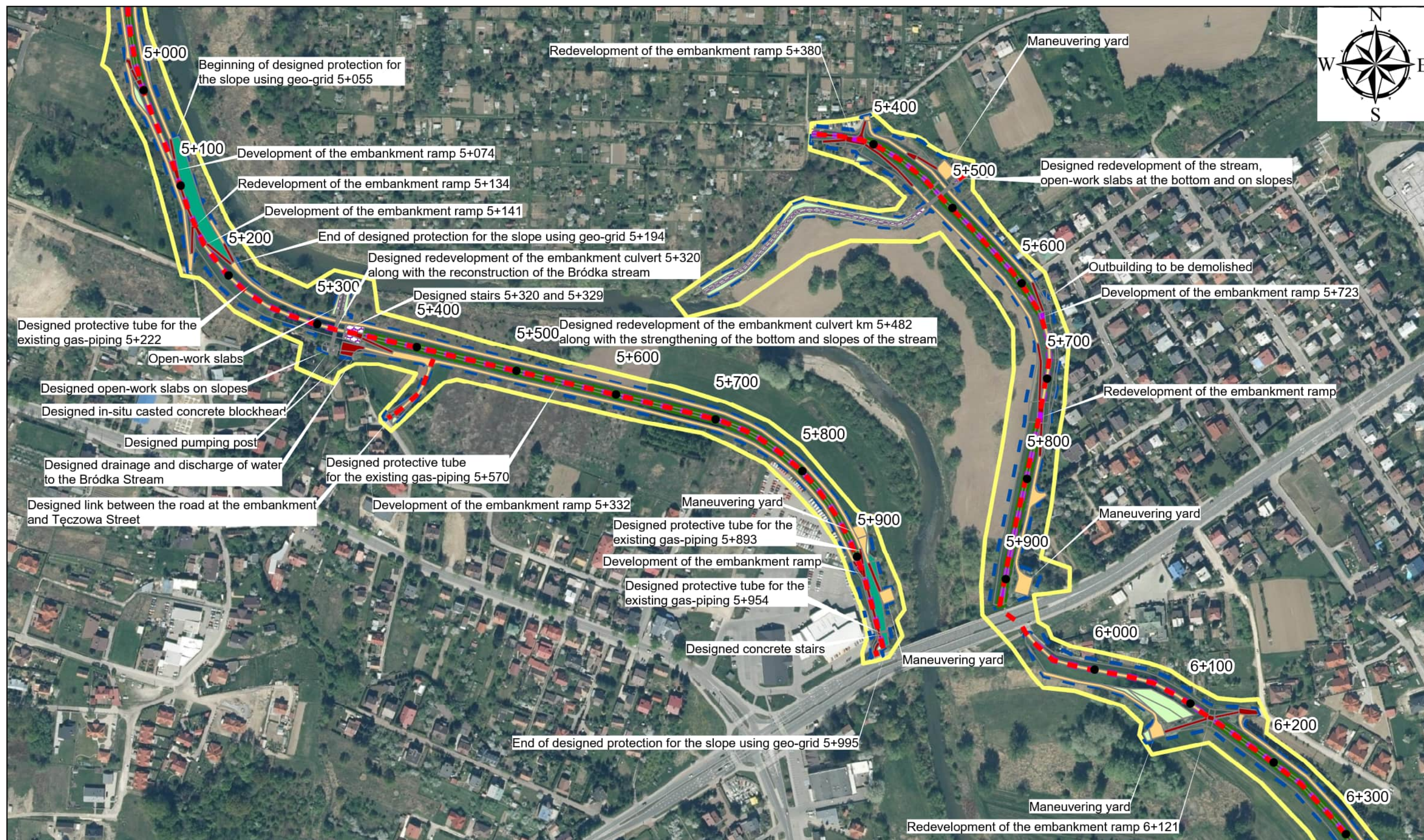
## Map of Contract Location

**SHEET 4**

0 0,1 0,2 km

3D.2/2 Expansion of the left and right embankment of the Biala River  
in the Tarnow Municipality and the City of Tarnow





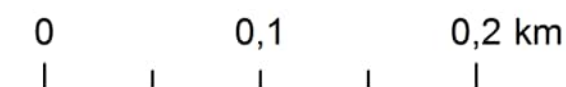
## Legend

- |  |                                     |                                 |
|--|-------------------------------------|---------------------------------|
| ● Mileage of embankment                      | ■ Anti-filtration membrane          | ■ Hardening with concrete slabs |
| — Axis of the embankment                     | ■ Strengthening with grasscrete     | ■ Designed sowing grass         |
| — Designed embankment                        | ■ Leveling of land - sowing grass   | — Investment boundary           |
| ■ Completing the losses of existing concrete | ■ Securing the slope with a geogrid | — Environmental Conditions      |
| ■ Hardening with crushed stone               |                                     |                                 |

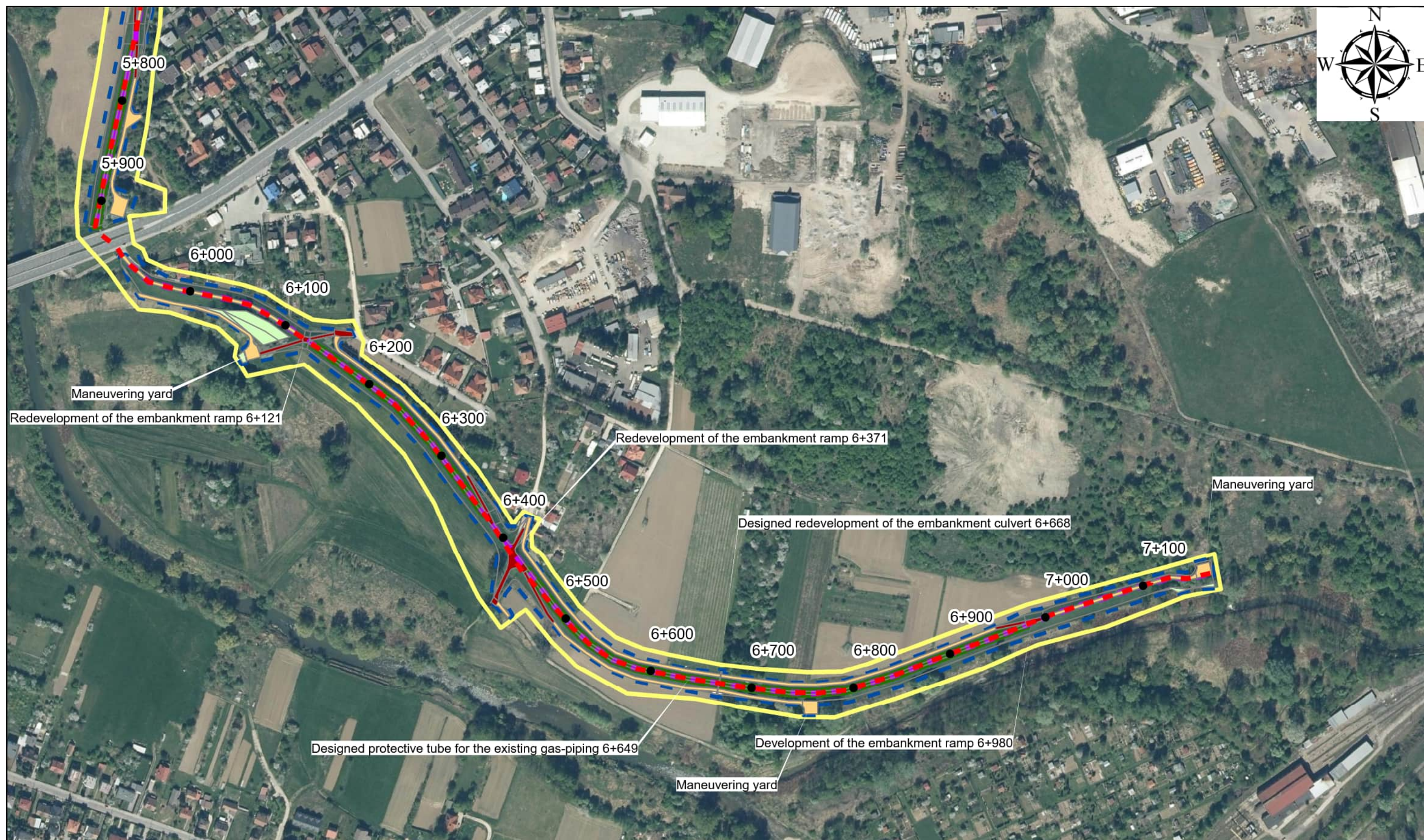
## Appendix No. 1 Map of Contract Location

**SHEET 5**

3D.2/2 Expansion of the left and right embankment of the Biala River in the Tarnow Municipality and the City of Tarnow







## Legend

- |  |                                     |                                 |
|--|-------------------------------------|---------------------------------|
| ● Mileage of embankment                      | ■ Anti-filtration membrane          | ■ Hardening with concrete slabs |
| — Axis of the embankment                     | ■ Strengthening with grasscrete     | ■ Designed sowing grass         |
| — Designed embankment                        | ■ Leveling of land - sowing grass   | ■ Investment boundary           |
| ■ Completing the losses of existing concrete | ■ Securing the slope with a geogrid | ■ Environmental Conditions      |
| ■ Hardening with crushed stone               |                                     |                                 |

## Appendix No. 1 Map of Contract Location

**SHEET 6**

3D.2/2 Expansion of the left and right embankment of the Biala River  
in the Tarnow Municipality and the City of Tarnow

